

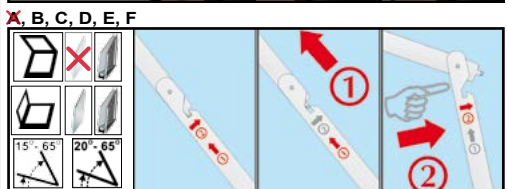
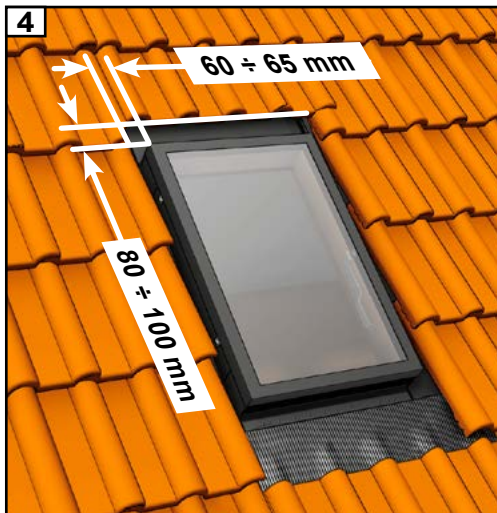
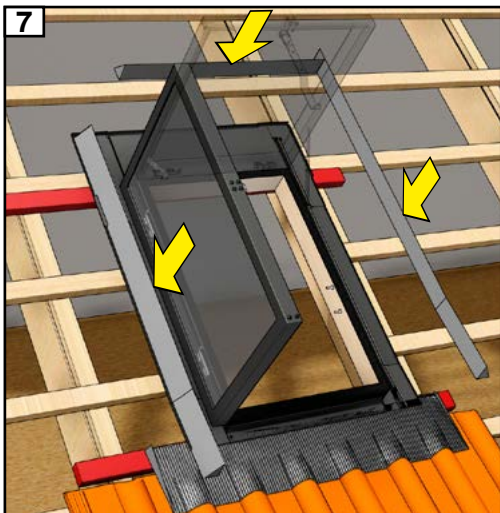
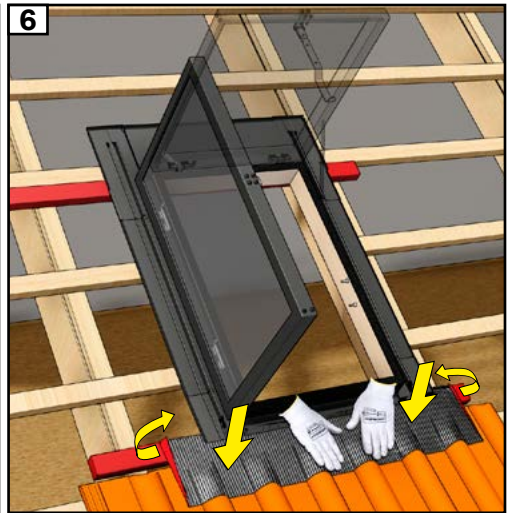
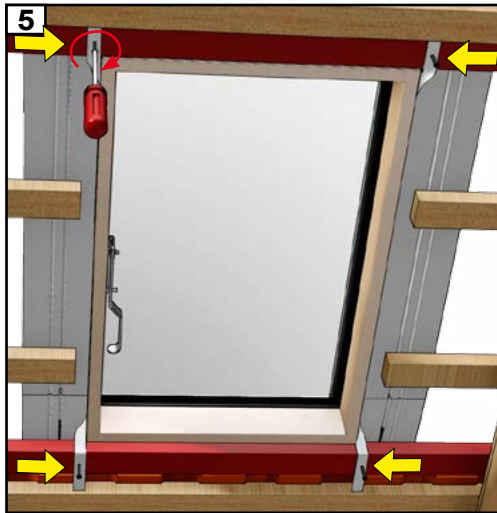
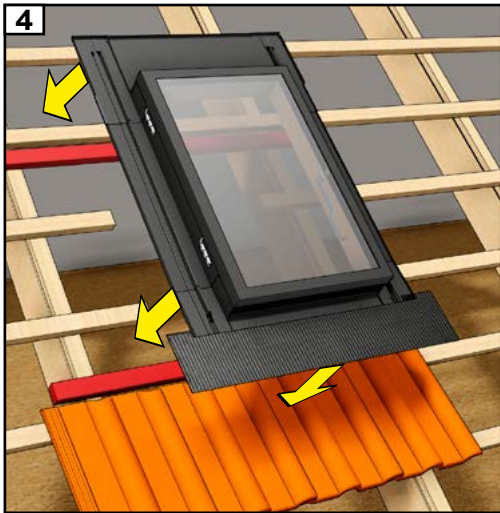
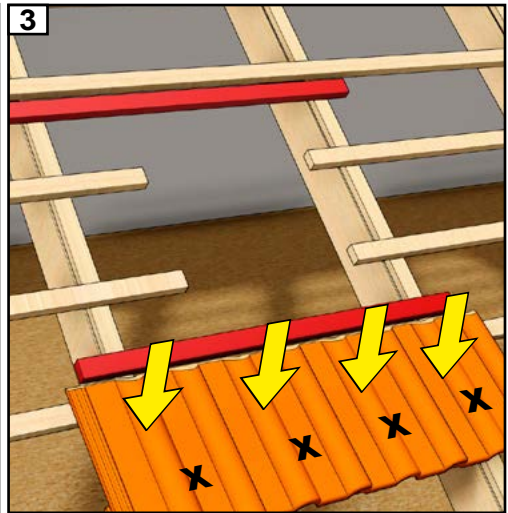
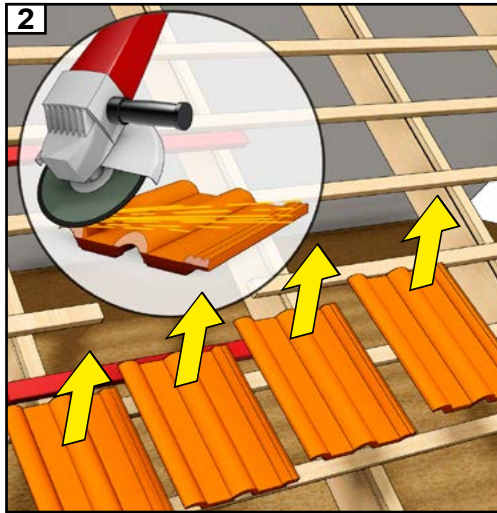
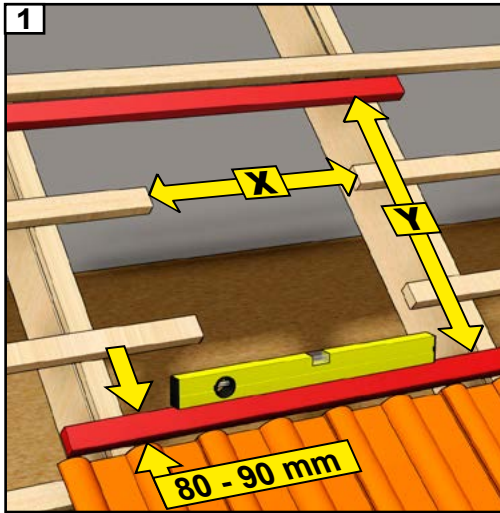
- (BG) покривни изходи
- (CZ) střešní výlezy
- (DE) die ausstiegfenster
- (ES) claraboyas
- (FR) châssis de toit

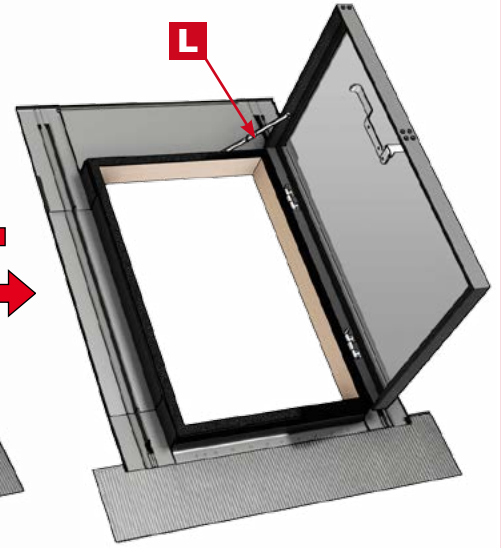
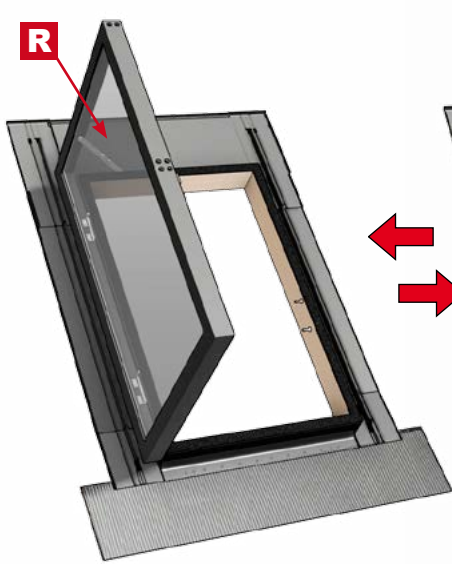
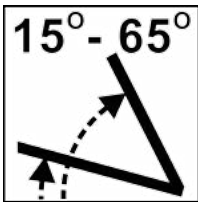
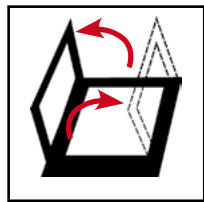
- (GB) access rooflight
- (GR) Φεγγίτης
- (HU) tetőkibúvó
- (IT) lucernaio de tetto
- (MK) izlaz na krov

- (PL) wylazy dachowe
- (PT) claraboia
- (RO) ferestre de acces pe acoperiş
- (RU) окно-люк
- (SE) access ljusinsläpp

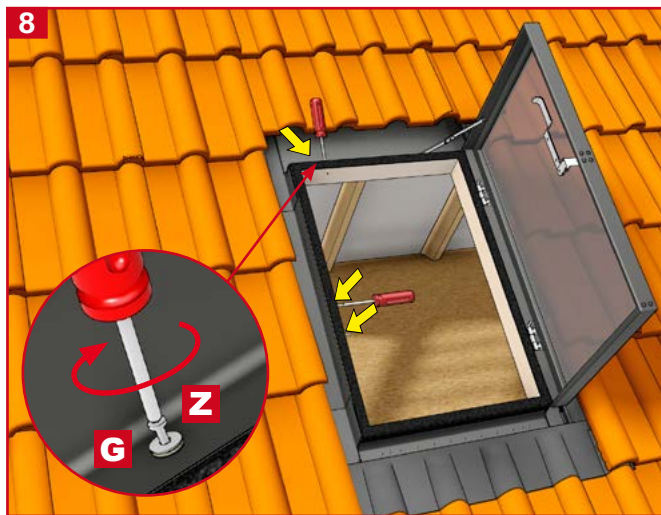
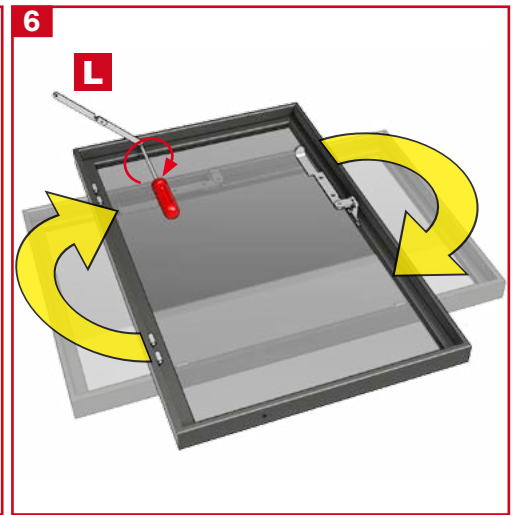
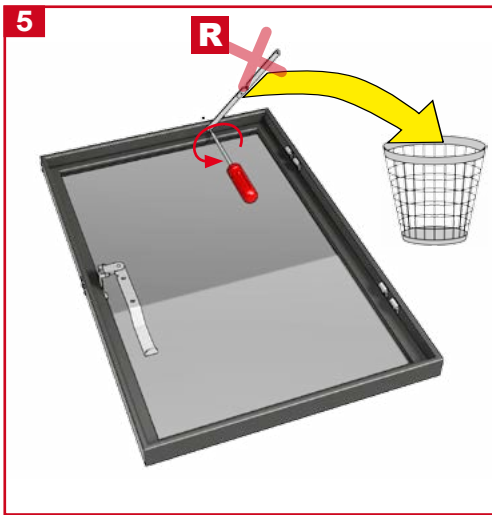
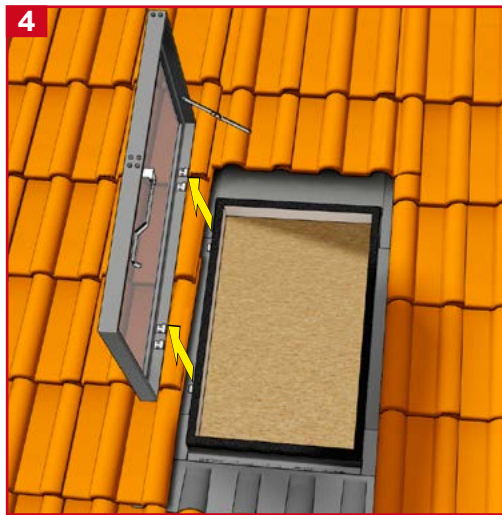
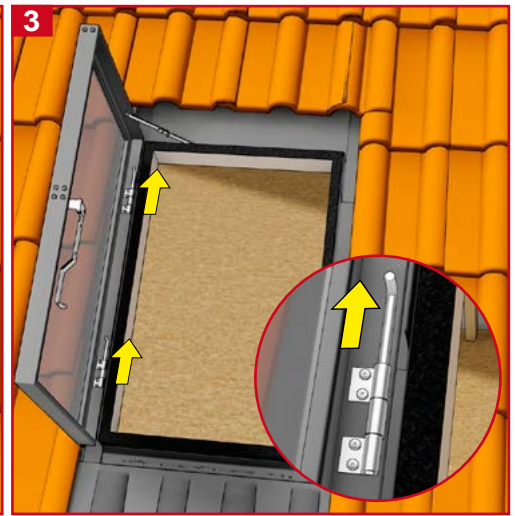
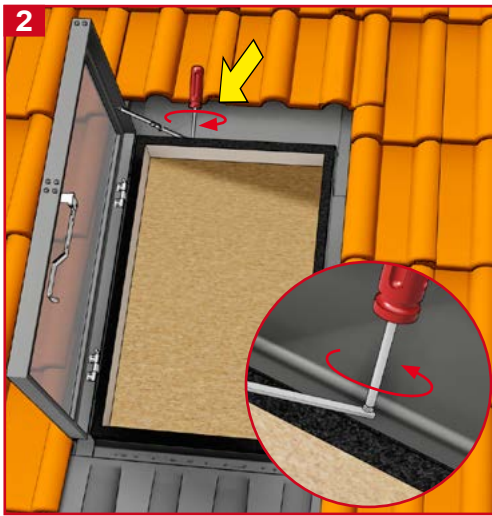
- (SK) výlezové okná
- (TR) çatı çıkış kapağı

45x55 x = 470mm y = 570mm	45x55 x = 470mm y = 570mm	45x73 x = 470mm y = 750mm	47x73 x = 490mm y = 750mm	45x73 x = 470mm y = 750mm	80x80 x = 820mm y = 820mm
	47x57 x = 490mm y = 590mm			47x73 x = 490mm y = 750mm x =mm y =mm





E, F



Producent zastrzega, iż nie będzie ponosić żadnej odpowiedzialności za nieprzestrzeganie wymogów bezpieczeństwa oraz przepisów prawa jak również prawa budowlanego przez właściciela, użytkownika, monterów oraz architekta.

The manufacturer reserves that it will not incur any liability for failure to comply with safety requirements and laws as well as construction law by the owner, operator, fitter and architect.

OKPOL 09.2015